

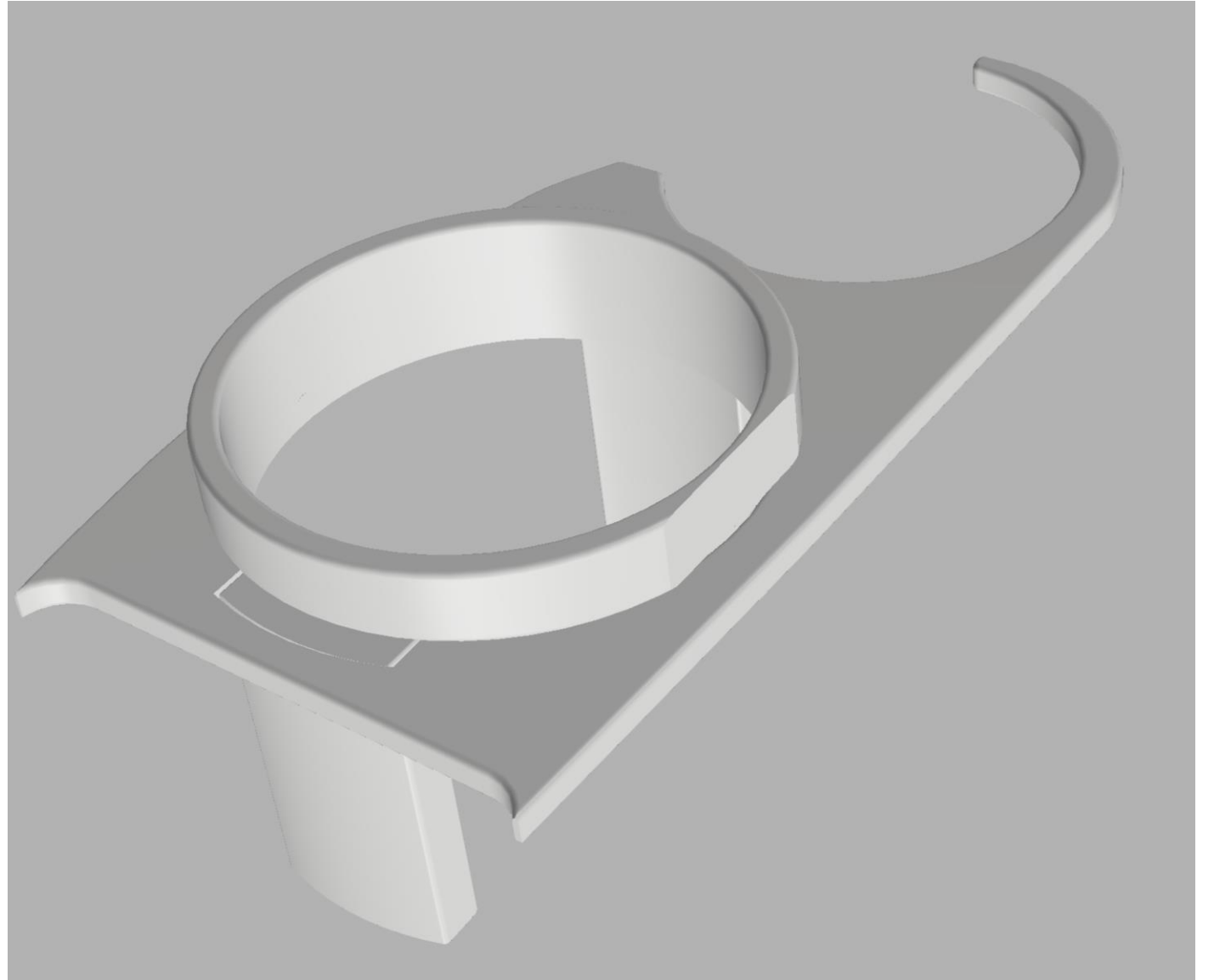
# Cupholder

---

for Polestar 2

Instructions v.2

- **actualwood.dk**



The cupholder is manufactured via 3D printing and CNC machining. The product will be sufficiently strong for this purpose, but low volumes means a more fragile product when disassembled and assembled again.

Please pay attention to the instructions in this manual.

The base of the product has same shape between left and right side, but the product has a surface finish targeted a specific side. Please pay attention to make the nice finish face upwards before mounting the supports.

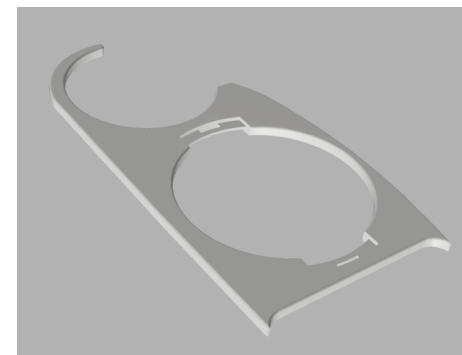
The design of this product is owned and registered by actualwood.dk in EU in 2023. Copying the design and function in part or fully is not permitted under law in any EU country.

Actualwood.dk is in no way associated with Polestar AB. The Polestar logo and registered trademark is property of Polestar AB

Parts for each side

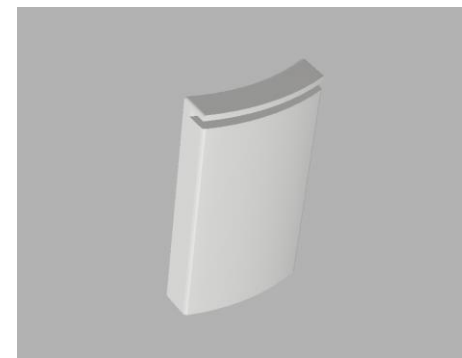
**1 x**

Base



**2 x**

Supports

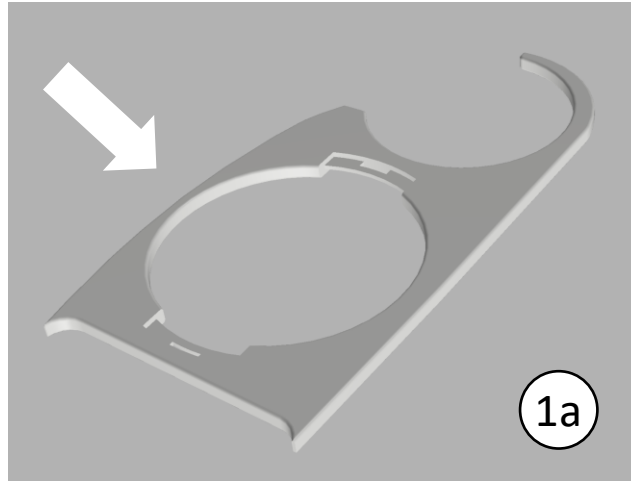


**1 x**

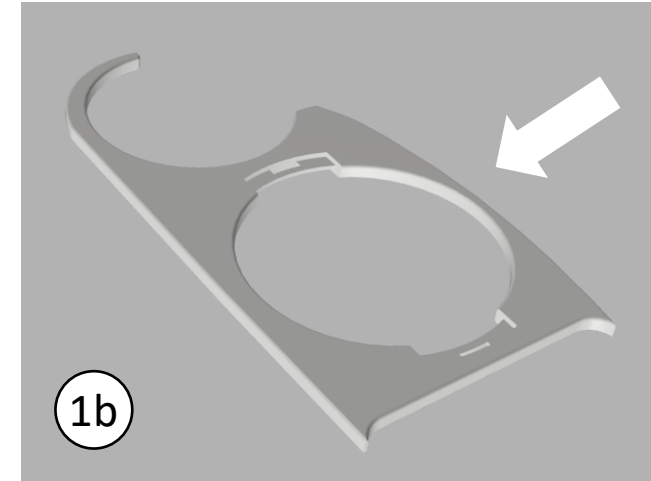
Locking ring



For left door

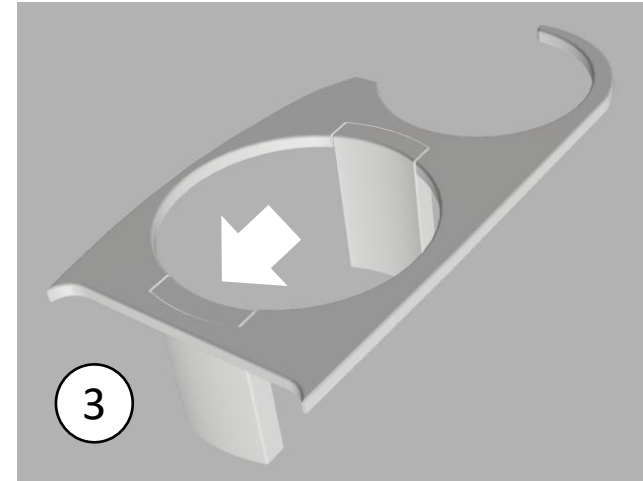
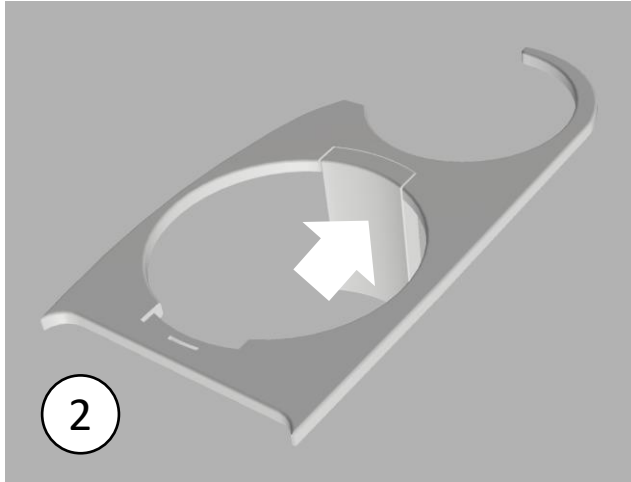


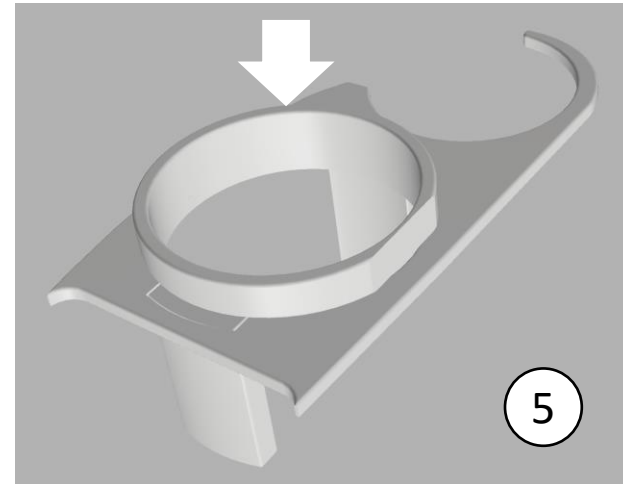
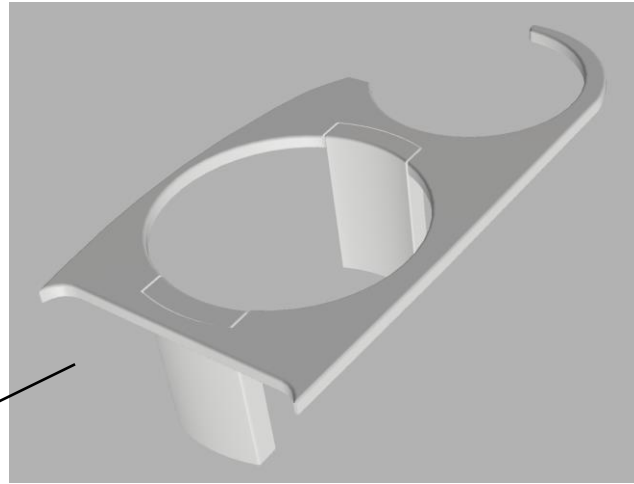
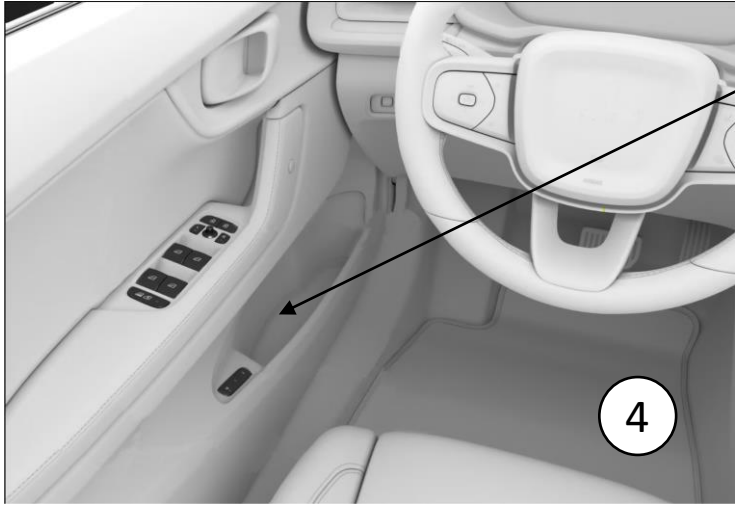
For right door



Curved part facing outwards

Showing for left door!





**actualwood.dk**

Dronning Olgas Vej 18b  
2000 Frederiksberg  
Denmark